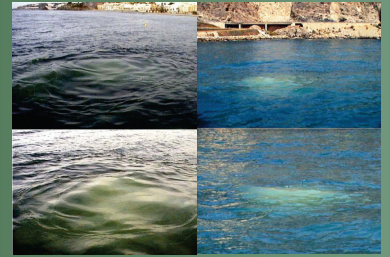




LOS BARCOS DE VIGILANCIA DE LAS AGUAS LITORALES ANDALUZAS, DURANTE LAS ACTIVIDADES DE SEGUIMIENTO AMBIENTAL, DETECTAN IMPACTOS DE VERTIDO EN LA SUPERFICIE DEL MAR.



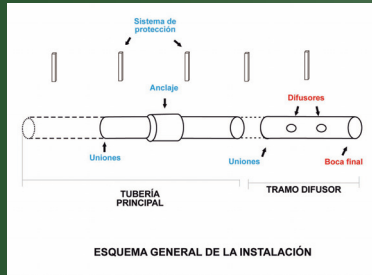
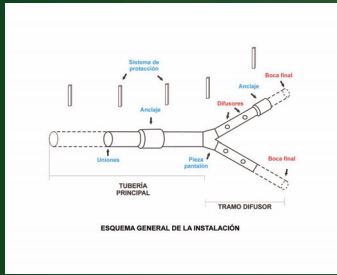
INSPECCIÓN SUBMARINA

REVISIÓN ESTRUCTURAL

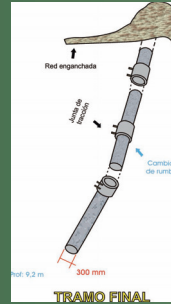
DETECCIÓN DE ANOMALÍAS

TRAMO DIFUSOR EN PANTALÓN

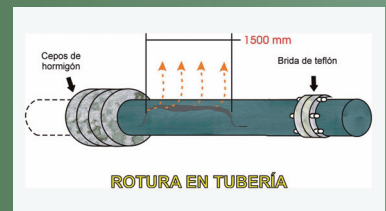
TRAMO DIFUSOR ÚNICO



ROTURAS CON DESCONEXIÓN



ROTURAS PUNTALES



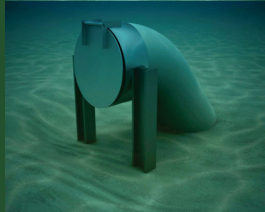
DIFUSORES

BOCAS FINALES

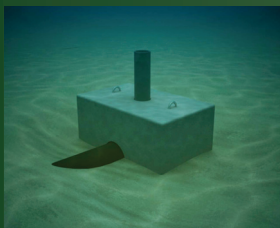
SISTEMAS ANTIARRASTRE



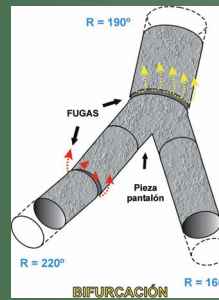
UNIONES



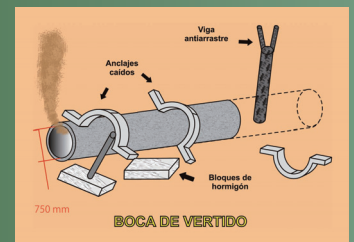
ANCLAJES



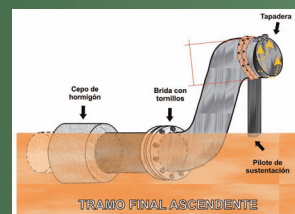
FUGAS



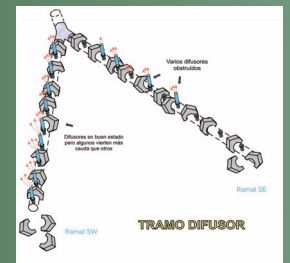
INESTABILIDAD



ENTERRIMIENTOS



VERTIDOS NO HOMOGÉNEOS



VALORACIÓN FINAL

DEFICIENTE

DEFICIENTE

REGULAR

ACEPTABLE

ACEPTABLE